

TREMOVE Data from the Czech Republic

Country data 10 201 thous. inh.
 Vehicle fleet HDP p.c. 6 815 US \$
 Vehicle usage 4 852thous. employed
 Emission factor Av.salary 490 EUR (2002)

Jan Kašík
 DHV CR, spol.s r.o
 jan.kasik@dhv.cz

STRUKTURA DOMÁCNOSTÍ v roce 2001
 podle výše čistého měsíčního příjmu

- < 123 EUR
- < 184 EUR
- < 246 EUR
- < 307 EUR
- < 369 EUR
- < 430 EUR
- > 553 EUR

TREMOVE Vehicle fleet

- Central Registry of Vehicles by Ministry of Interior
www.mvcr.cz/statistiky/crv
- Centre of Transport Research
www.mdcz.cz/text/rocnka_02/yearbook/obsah.htm
- Automotive Industry Association
www.autosap.cz
- Division of categories according to vintage proceeded by Registry of Vehicles for the project TREMOVE

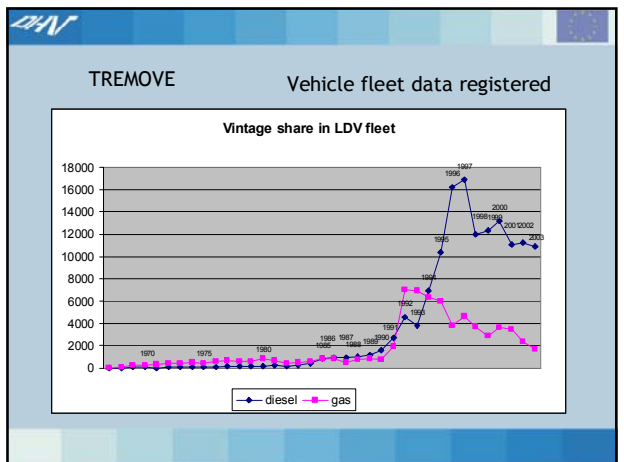
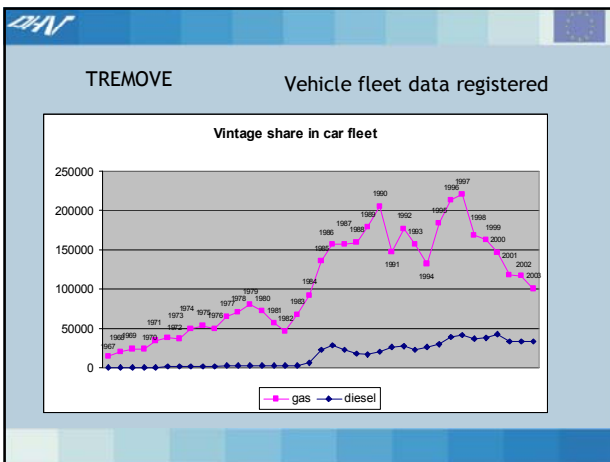
TREMOVE Vehicle fleet data registered

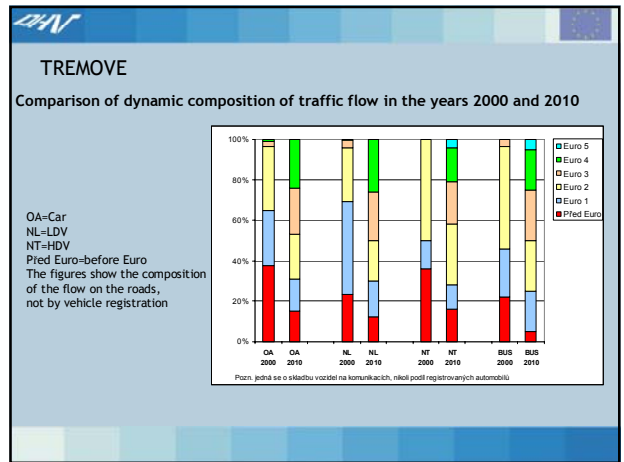
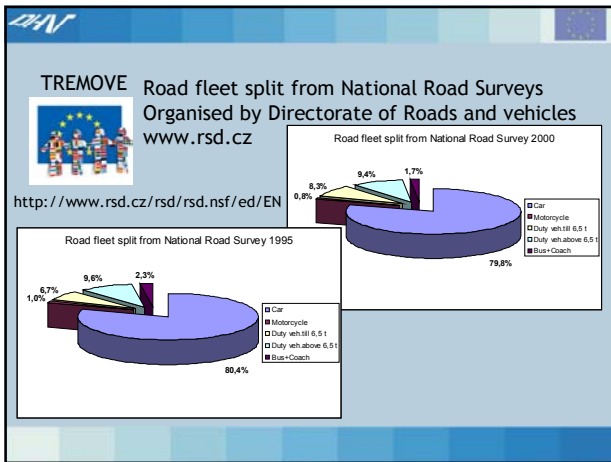
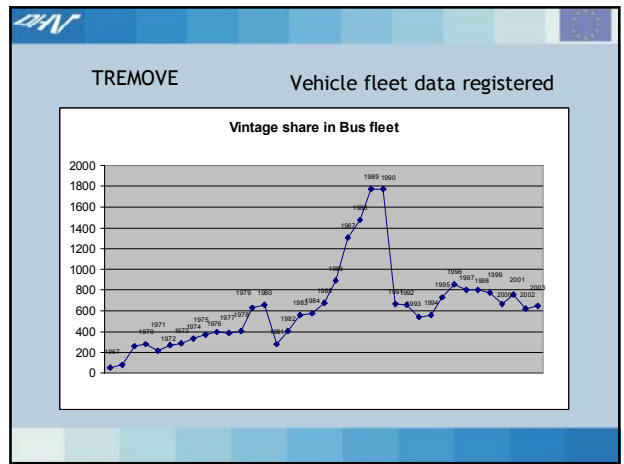
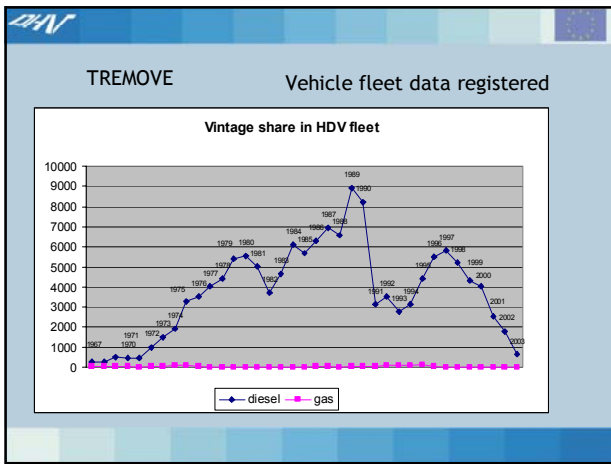
- Individual attributes are: licence number, licence plate type, status, vehicle type, producer, type, body type, numbers of MOT certificate, issue date of MOT certificates, engine number, VIN number, prevailing colour, additional colour.
- Type attributes are: Type, type number, model number, body type, category, vintage, type registration number, engine type, fuel type, cylinders capacity, # seats, # axles, load weight, total weight.

TREMOVE Vehicle fleet data 2003

3 706 012 Cars 1 : 2,75 + 751 634 Motorc. + 340 094 Duty veh.

Category	Count	Sub-category	Count	Sub-category	Count
Total number	3706012	Motorcycles	751634	Total number	340094
By age of motor car	1000000	By age of motor car	1000000	By age of motor car	1000000
By engine capacity	1000000	By engine capacity	1000000	By engine capacity	1000000
By body type	1000000	By body type	1000000	By body type	1000000
By fuel type	1000000	By fuel type	1000000	By fuel type	1000000
By engine type	1000000	By engine type	1000000	By engine type	1000000
By number of seats	1000000	By number of seats	1000000	By number of seats	1000000
By load weight	1000000	By load weight	1000000	By load weight	1000000
By total weight	1000000	By total weight	1000000	By total weight	1000000





TREMOVE Mileages of vehicles from National Road Surveys

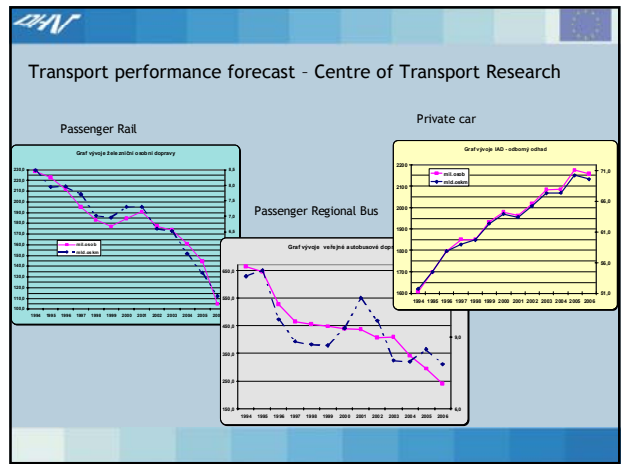
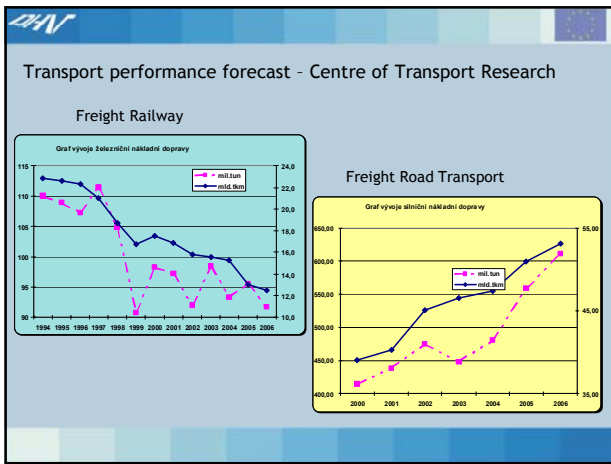
Organised by Directorate of Roads and vehicles
www.rsd.cz

	1985		1990		1995		2000					
	thous.km	km/v. mil.veh.km	thous.km	km/v. mil.veh.km	thous.km	km/v. mil.veh.km	thous.km	km/v. mil.veh.km				
Car	2042	8000	15724	2365	8160	18603	3036	8500	26756	3685	8200	31332
Duty veh.	244	23600	2495	293	21000	3578	321	13300	5466	453	15300	7147
Motorcycle	473	1090	507	450	1140	482	441	600	270	383	810	327

Calculated from numbers of cars in national car register and total performance found during road survey

Transport performance - Comparison TREMOVE - Czech forecast

TREMOVE data	1990	1995	2000	2005	2010	2015
Transport performance - total (mil.tonne.km)						
Road transport	-	22 610	25 287	28 238	31 872	35 455
Road inland waterway transport	-	31 300	34 810	38 854	43 016	48 858
Sea transport	-	1 410	1 568	1 733	2 215	2 215
Air transport	-	-	-	-	-	-
Definition of methodology of traffic forecast data	1990	1995	2000	2005	2010	2015
Transport performance - total (mil.tonne.km)	27 049	59 644	64 527	65 641	68 414	68 858
Road transport	22 621	22 238	21 910	19 758	18 713	17 488
Road inland waterway transport	31 288	30 082	40 640	33 911	38 864	39 036
Sea transport	1348	1381	744	558	915	773
Air transport	33	26	27	86	30	38
Definition of methodology	2276	2271	2358	2079	1795	1612
TREMOVE / definition of methodology						
Transport performance - total (mil.tonne.km)						
Road transport	?	100%	100%	100%	100%	100%
Road inland waterway transport	?	100%	100%	100%	100%	100%
Sea transport	?	100%	100%	100%	100%	100%
Air transport	?	?	?	?	?	?
Definition of methodology	?	?	?	?	?	?



Transport performance - Comparison TREMOVE - Czech forecast

TREMOVE data	1990	1995	2000	2005	2010	2015
Transport performance - ton (mid. tonne day)						
Road transport	-	22 600	25 287	28 208	31 672	35 456
Road transport	-	31 300	34 810	38 864	43 516	48 896
Road passenger transport	-	1 400	1 958	2 750	3 815	5 212
Air transport	-					
Sea/river transport	-					
Definition of methodology of traffic forecast data	1990	1995	2000	2005	2010	2015
Transport performance - ton (mid. tonne day)	97 049	90 046	84 827	80 882	76 498	72 888
Road transport	22 822	22 338	21 010	19 700	18 713	17 408
Road transport	31 328	30 052	28 640	27 911	26 924	26 038
Road passenger transport	1246	1352	1744	2221	2915	3772
Air transport	31	20	27	56	120	200
Sea/river transport	2276	2277	2198	2070	1709	1612
TREMOVE - "definition of methodology"						
Transport performance - ton (mid. tonne day)	-	100%	100%	100%	100%	100%
Road transport	-	100%	88%	91%	91%	92%
Road transport	-	100%	88%	91%	91%	92%
Road passenger transport	-	100%	131%	100%	100%	100%
Air transport	-	-	-	-	-	-
Sea/river transport	-	-	-	-	-	-

MEFA'02

Special software for estimation of emissions and emission factors

Developed in co-operation of the Czech technical university and the company ATEM.

Emissions of NO_x, NO₂, SO₂, CO, PM, PM₁₀, C_xH_y, methane, propane, 1,3-butadiene, styrene, benzene, toluene, formaldehyde, acetaldehyde, benzo(a)pyrene in µg·km⁻¹ or g·km⁻¹

for passenger cars, LDV, HDV and BUS

fuel of the car: petrol, diesel, CNG, LPG

emission standard of the car (non-EURO, EURO 1, EURO 2, EURO 3 and EURO 4)

speed of the car

slope of the carriage way from +10 % to -10 %

the ageing of catalysts