

TREMOVE Contact Group Meeting

27-28 May 2004

The Road Vehicle Stock Module in TREMOVE

Focus on baseline modelling

(Jasper Knockaert; Stane Bozicnik, Bart Van Herbruggen)

Presentations on road vehicle stock

- ♦ 14.00 - 14.30 (Bart Van Herbruggen)
 - General overview and prel. results of road vehicle stock module
 - Further work plan
- ♦ 14.30 - 15.15 (Jasper Knockaert)
 - Description of car choice logit model and its calibration
 - Overview and results of new calibration (april 2004)
 - Further work plan and issues
- ♦ 15.15 - 15.30 Discussion
- ♦ 15.30-16.00 *Break*
- ♦ 16.00 - 16.30 (Stane Bozicnik)
 - Vehicle fleet information and issues in new member states (focus on Slovenia)
- ♦ 16.30 - 17.00 General discussion

Output from the demand module

Vehicle-kilometres for :

- ♦ cars
- ♦ motorcycles
- ♦ Mopeds
- ♦ light duty trucks (<3.5 ton)
- ♦ bus & Coach

Thus load factors from SCENES
(exogenous)

Ton-kilometres for :

- ♦ Heavy duty trucks

Thus load factor in veh stock module
(endogenous)

By type of road and peak hours vs off-peak hours

Road vehicle types in TREMOVE baseline (consistency with COPERT)

Mopeds

2 stroke < 50 cm³

Motorcycles

2-stroke >50 cm³

4-stroke <250 cm³

4-stroke 250 - 750 cm³

4-stroke >750 cm³

Cars

Gasoline < 1400 cc

Gasoline 1400 – 2000 cc

Gasoline > 2000 cc

Diesel < 1400 cc

Diesel 1400 - 2000 cc

Diesel > 2000 cc

Buses & Coaches

Light duty vehicles

Gasoline

Diesel

Heavy duty trucks

Diesel 3,5 - 7,5 t

Diesel 7,5 - 16 t

Diesel 16 - 32 t

Diesel >32t

Baseyear data sources

TRENDS (EU15) & Nat. Sources (CH,NO,CZ,HU,SI,PL)

- Vehicle fleets
- Vehicle age distributions
- Scrappage rates
- Relative usage (type- and age-dependency)

German and Italian data

- Heavy Duty Truck Road Counts and Load Factors

Baseyear vehicle stock for cars, moped, motorcycles, bus/coach, ldv

Vkm by mode, road type, peak/off-peak

SCENES



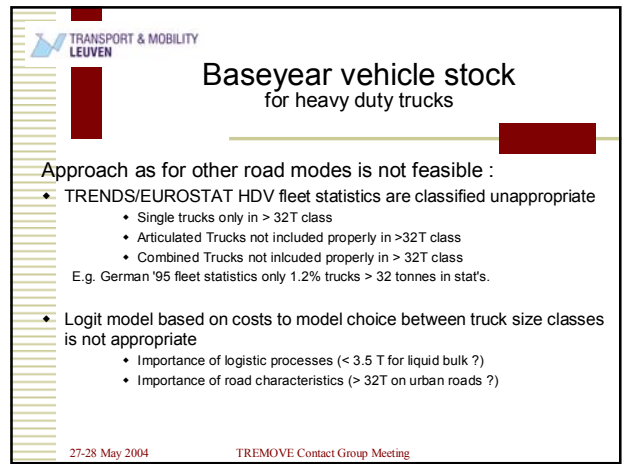
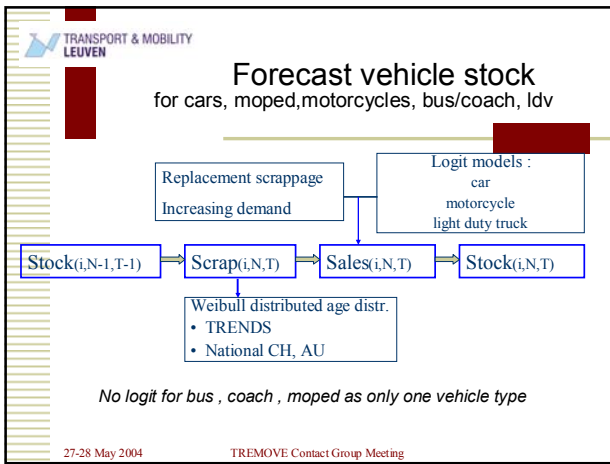
Vehicle usage
Fleet Composition
Age Distribution



TRENDS
National Stat.

Vehicle-km by vehicle type, vehicle vintage, road type, peak/off-peak

vehicle technology vehicle speed



TRANSPORT & MOBILITY LEUVEN

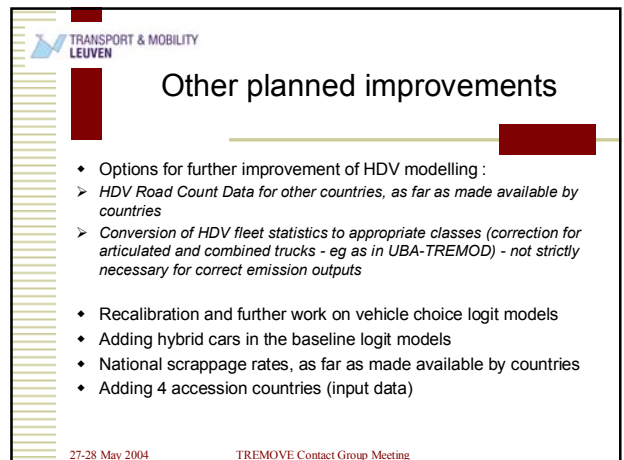
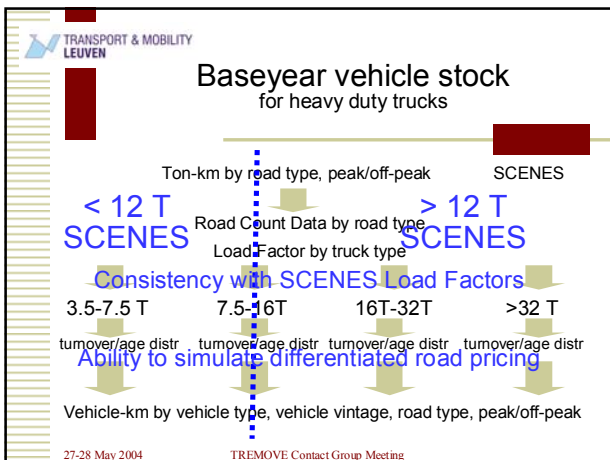
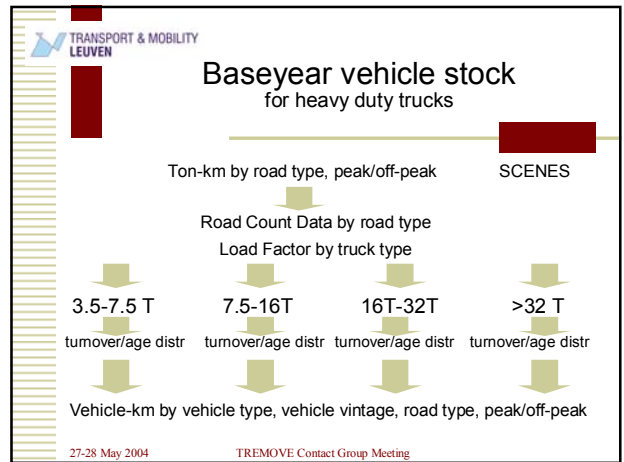
Baseyear vehicle stock for heavy duty trucks

Example of road count data used :

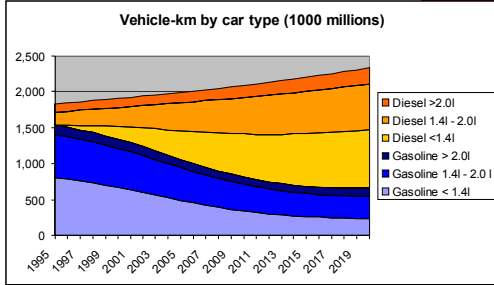
Size class	highway	rural	urban
HDV 3.5-7.5 ton	12%	28%	36%
HDV 7.5-16 ton	4%	10%	13%
HDV 16-32 ton	39%	39%	36%
HDV > 32 ton	45%	23%	15%

TREMOVE uses DE road counts
(also IT road counts available)

27-28 May 2004 TREMOVE Contact Group Meeting



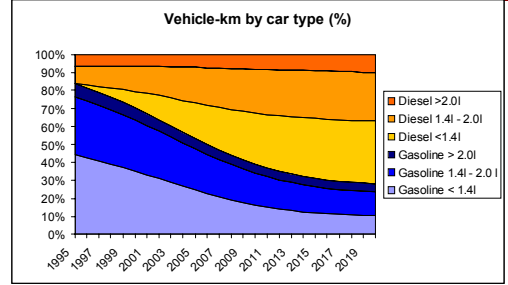
Results : Vkm by car type (EU15+NO+CH)



27-28 May 2004

TREMOVE Contact Group Meeting

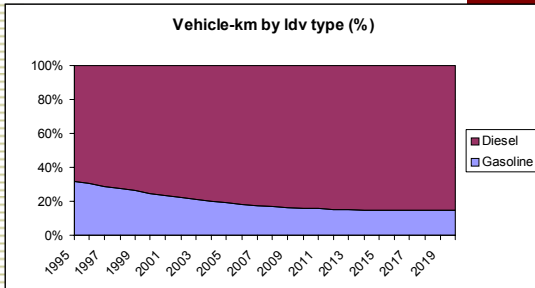
Results : Vkm by car type (EU15+NO+CH)



27-28 May 2004

TREMOVE Contact Group Meeting

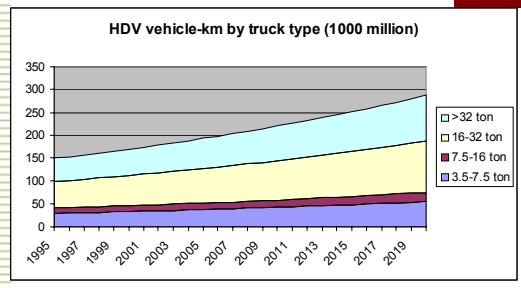
Results : Vkm by LDV type (EU15+NO+CH)



27-28 May 2004

TREMOVE Contact Group Meeting

Results : Vkm by HDV type (EU15+NO+CH)



27-28 May 2004

TREMOVE Contact Group Meeting