

TREMOVE

Vehicle stock data

Road

- › EU15: TRENDS
- › Accession Countries

Rail

- › TRENDS

Aviation

- › TRENDS

TREMOVE

Vehicle stock data ROAD

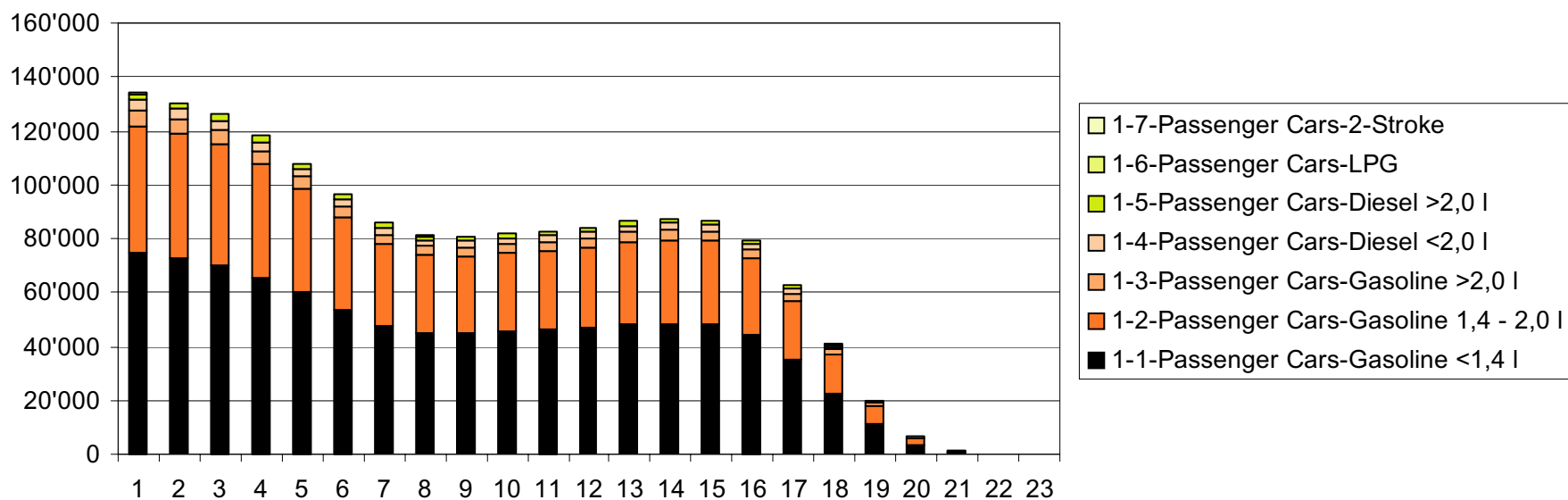
Vehicle stock module TRENDS

- › Simulation of vehicle fleet turnover
- › Fleets 1970 to 1996
- › New registrations 1985 to 1994
- › Simulation of Survival and Scrappage Rates
- › Estimation of parameters in order to best reproduce the new registrations of past years

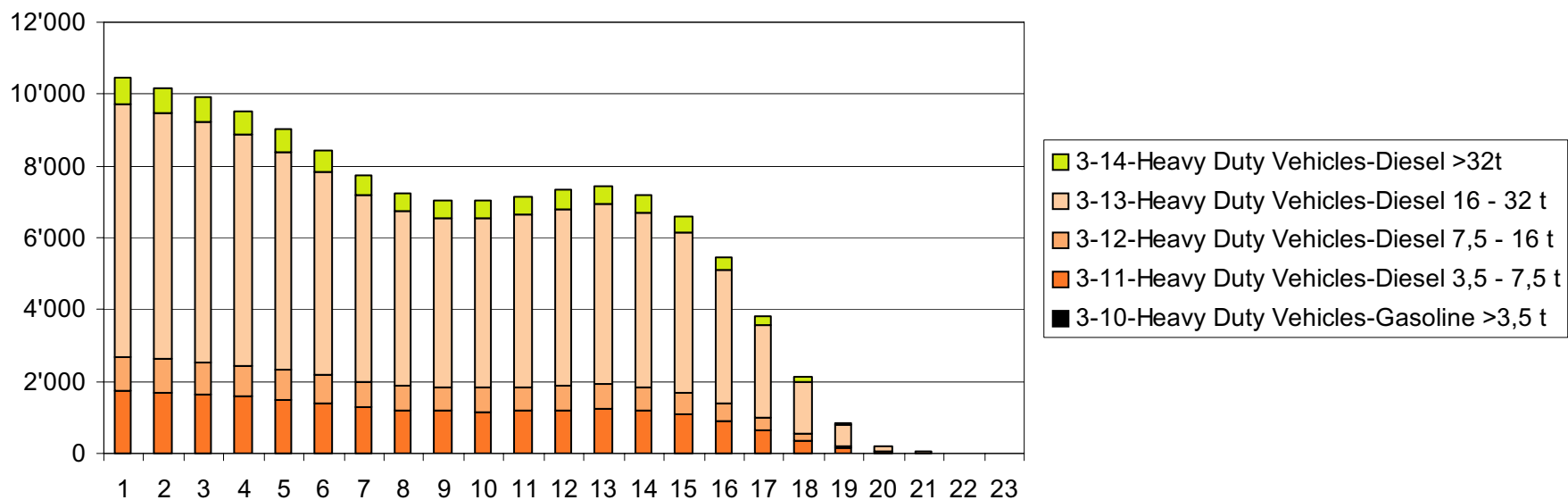
Inputs for TREMOVE

- › Vehicle stock 1995, including age distributions
- › Scrappage rates (two parameters of Weibull function)

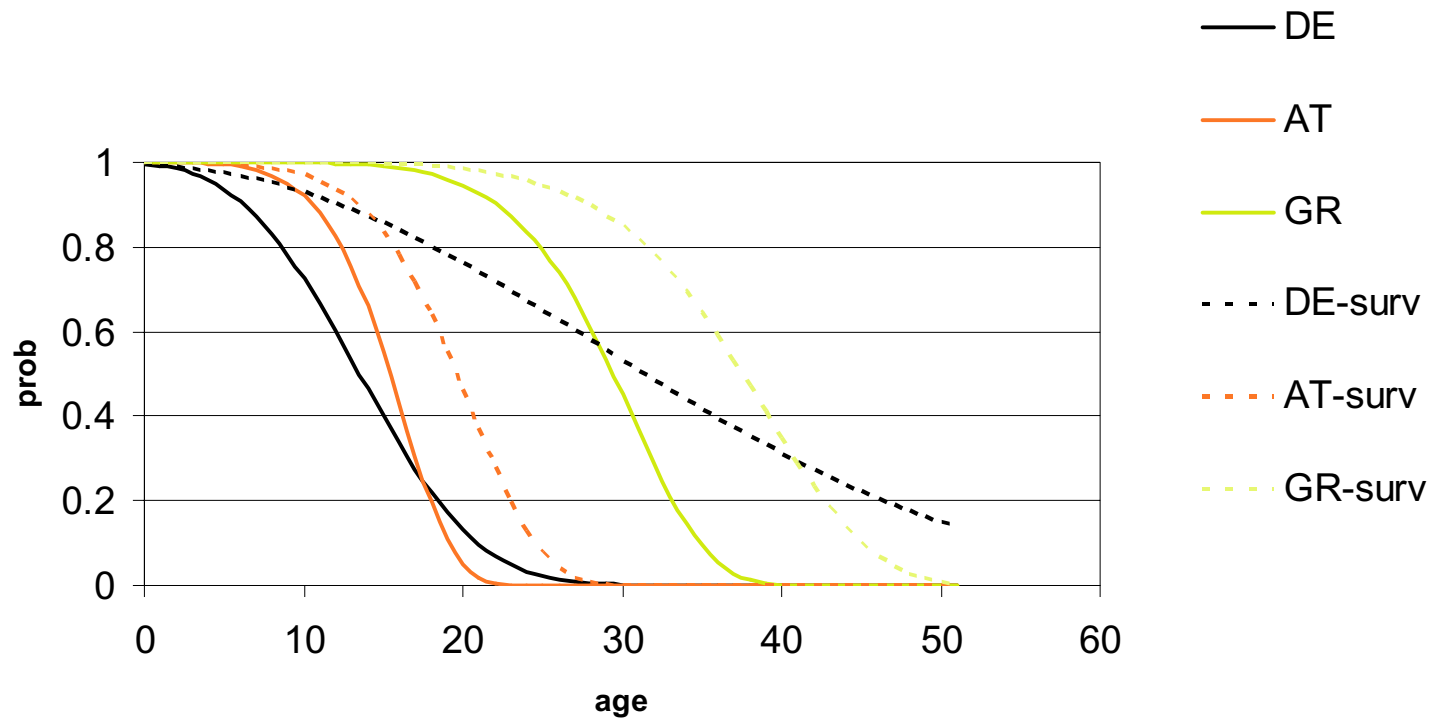
DK 1995: Vehicle Fleet



DK 1995: Vehicle Fleet



lifetime fct and survival prob



TREMOVE

Vehicle stock data ROAD

Demand module categories

Small Cars

Big Cars

Motorcycles

Light duty vehicle

Heavy duty vehicles

Buses and Coaches

Vehicle stock categories

Gasoline - small (<1.4l)

Gasoline - medium (1.4l - 2.0l)

Gasoline - large (> 2.0l)

Diesel - medium (1.4l - 2.0l)

Diesel - large (> 2.0l)

LPG

2 strokes < 50cc (= mopeds)

2 strokes > 50cc

4 strokes 50 - 250 cc

4 strokes 250 - 750 cc

4 strokes > 750 cc

LDV - gasoline

LDV - diesel

HDV - diesel 3.5 T - 7.5 T

HDV - diesel 7.5 T - 16 T

HDV - diesel 16 T - 32 T

HDV - diesel >32 T

HDV - gasoline

Buses

Coaches

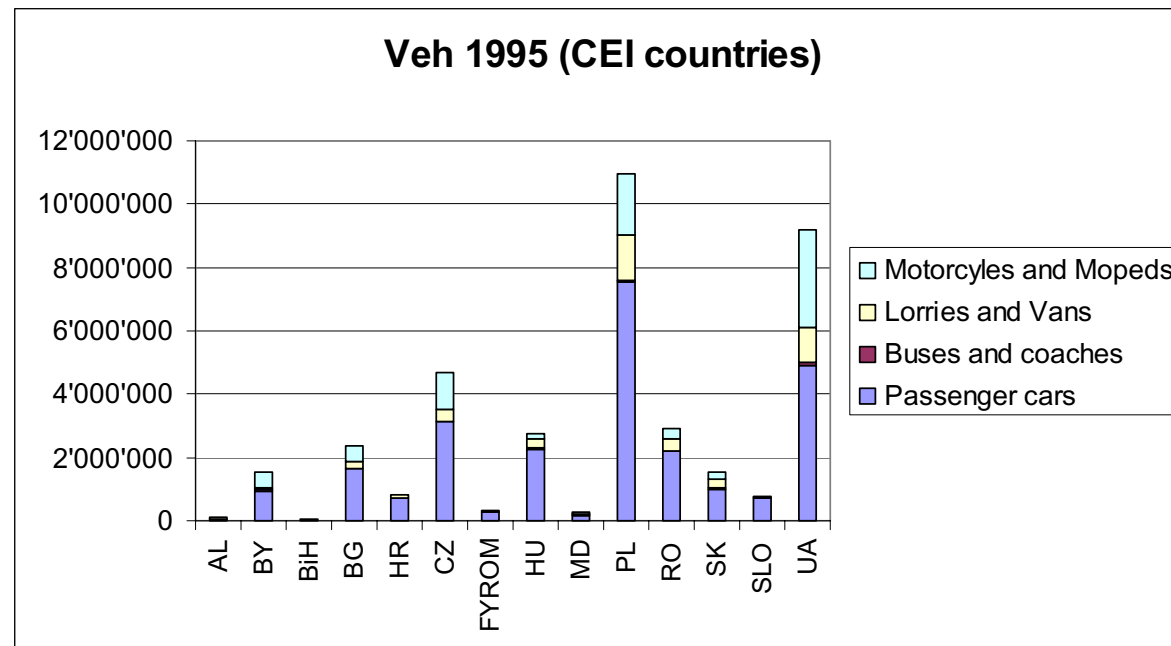
TREMOVE

Vehicle stock data ROAD

Accession Countries

- › EUROSTAT, international statistics
- › National data
- › OECD study (“EST in the CEI countries in transition”)

INFRAS



TREMOVE

RAIL

TRENDS

- › **Traffic activity (based on EUROSTAT, NewCronos)**
 - › Pass: train-km, ghtkm (split: loc/railcar; D/El/Steam)
 - › Freight: train-km, ghtkm (split: loc/railcar; D/El/Steam)
- › **Rolling stock categories**
 - › High Speed Trains (HST): $V_{\max} > 200$ km/h
 - › Intercity/Interregional
 - › Urban/Regional/Local
 - › Freight

OPEN QUESTIONS

- › **Methodological**
 - › Link transport demand \leftrightarrow vehicle categories
 - › Necessity of stock turnover module
- › **Complementary data (UIC)**
 - › Tractive stock (by type)
 - › Age distributions (by type)

TREMOVE

AVIATION

TRENDS

- › EUROCONTROL data
- › Orig-Dest-Matrix, 1996-2001 (ca 180 EU-zones, 30 ext.)
- › 34 aircraft types (groups)
- › Flexibility in classifying (distance/aircraft groups)

OPEN QUESTIONS

- › Link transport demand <--> vehicle categories
- › Necessity of stock turnover module
- › “aggregate” estimation of reduction of emission factors